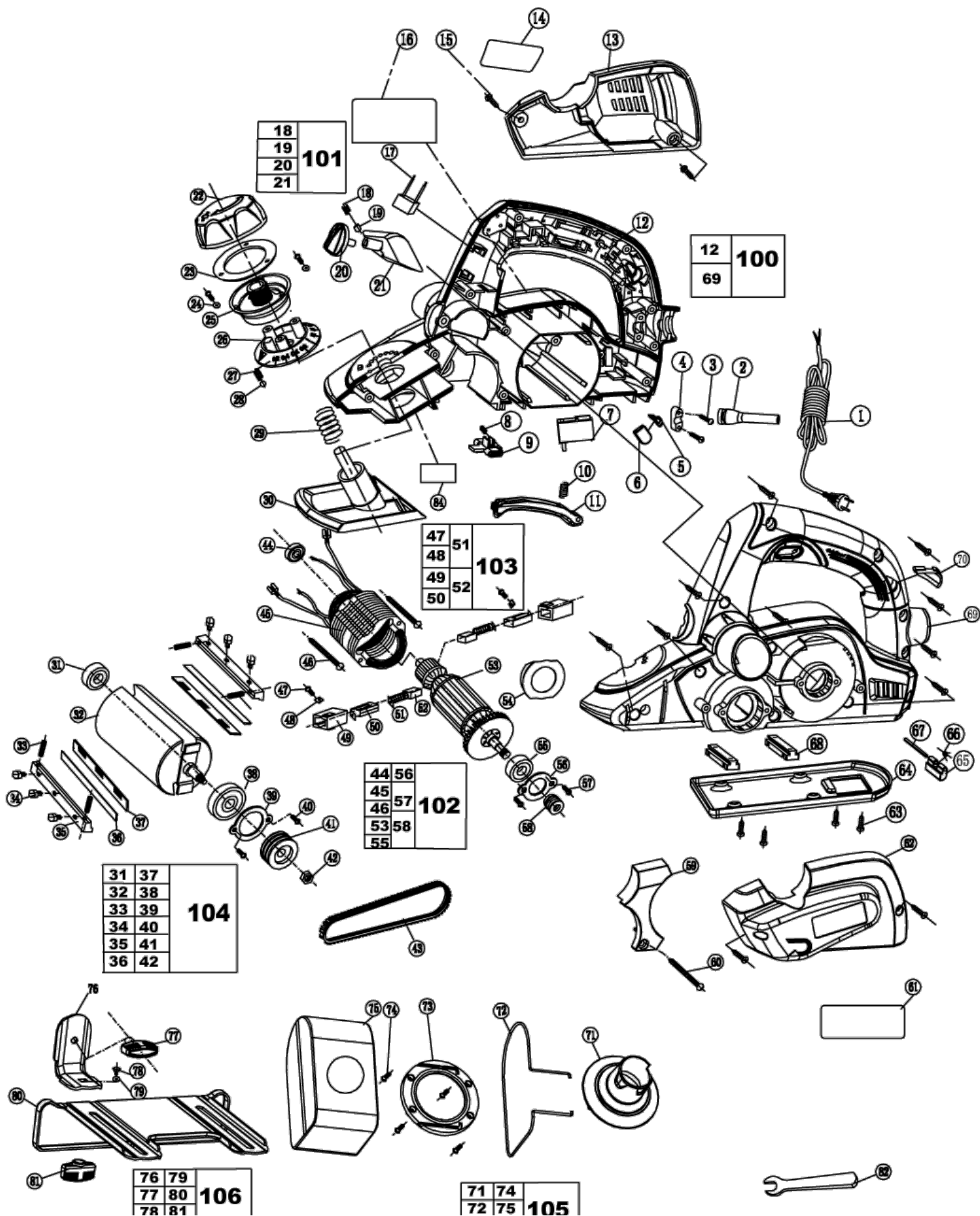


600W Planer

5133000350 - EPN6082CHG - EPN6082CHG#1





Position	Quantity	Description	Part number	EAN
001	1	POWER CORD (VDE) EPN6082C/7582N	5131015555	
002	1	PROTECTION SLEEVE	5131028064	
003	14	SCREW	5131028065	
004	1	CLAMP	5131028066	
006	1	INDICATOR LIGHT	5131028067	
007	1	SWITCH	5131001418	
008	1	SPRING EPN6082C/7582N	5131003176	
009	1	PUSH-BUTTON	5131028100	
010	1	SPRING EPN7582N / 6082C	5131003178	
011	1	TRIGGER	5131028101	
013	1	HOUSING	5131028103	
015	1	SCREW ST4.1X19 EPN7582N/6082C	5131003181	
017	1	CAPACITOR TNS-2TH X2K 275V EPN7582N	5131003180	
023	1	JUNK RING	5131028105	
024	2	WASHER	5131028075	
025	1	ANGLE MECHANISM EPN6082C	5131016651	
026	1	INDICATOR	5131028106	
027	1	SPRING	5131028079	
028	1	BALL	5131028080	
029	1	SPRING	5131028082	
030	1	SHOE	5131028107	
031	1	BEARING 606-2RS EPN7582N	5131003187	
038	1	BEARING 6200-2RS EPN7582N/6082C	5131003188	
041	1	DRIVEN WHEEL EPN6082C/7582N	5131003189	
043	1	BELT	5131003190	
054	1	INSUL.FOR END PLATE	5131028085	
059	1	AIRFLOW GUIDE COVER EPN7582N/6082C	5131015554	
060	1	SCREW	5131028086	
062	1	HOUSING COVER	5131028108	
063	4	SCREW ST4.1X10 EPN6082C/7582N	5131003192	
064	1	REAR PLATE EPN7582N / 6082C	5131003193	
065	1	COMBINATION STAND	5131028090	
066	1	SPRING	5131028091	
067	1	ROD	5131028092	
068	2	HOLDER	5131028093	
070	1	COVER	5131028109	
100	1	MOTOR HOUSING	5131028102	
101	1	WOBBLE DRIVE	5131028104	
102	1	MOTOR ASSY EPN6082C	5131003230	
103	1	CARBON BRUSH ASSY EPN6082C/7582N	5131003185	
104	1	BLADE BODY ASSY EPN7582N/6082C	5131003186	
105	1	DUST BAG	5131028110	
106	1	PARALLEL GUIDE	5131028111	
	1	SWISS ADAPTER	5131027809	
036	1	CUTTER	5132002337	
082	1	HEX. KEY - EPN6082C / EPN7582N	5132001600	
	1	TCT PLANER BLADE	5132000254	4960673703591