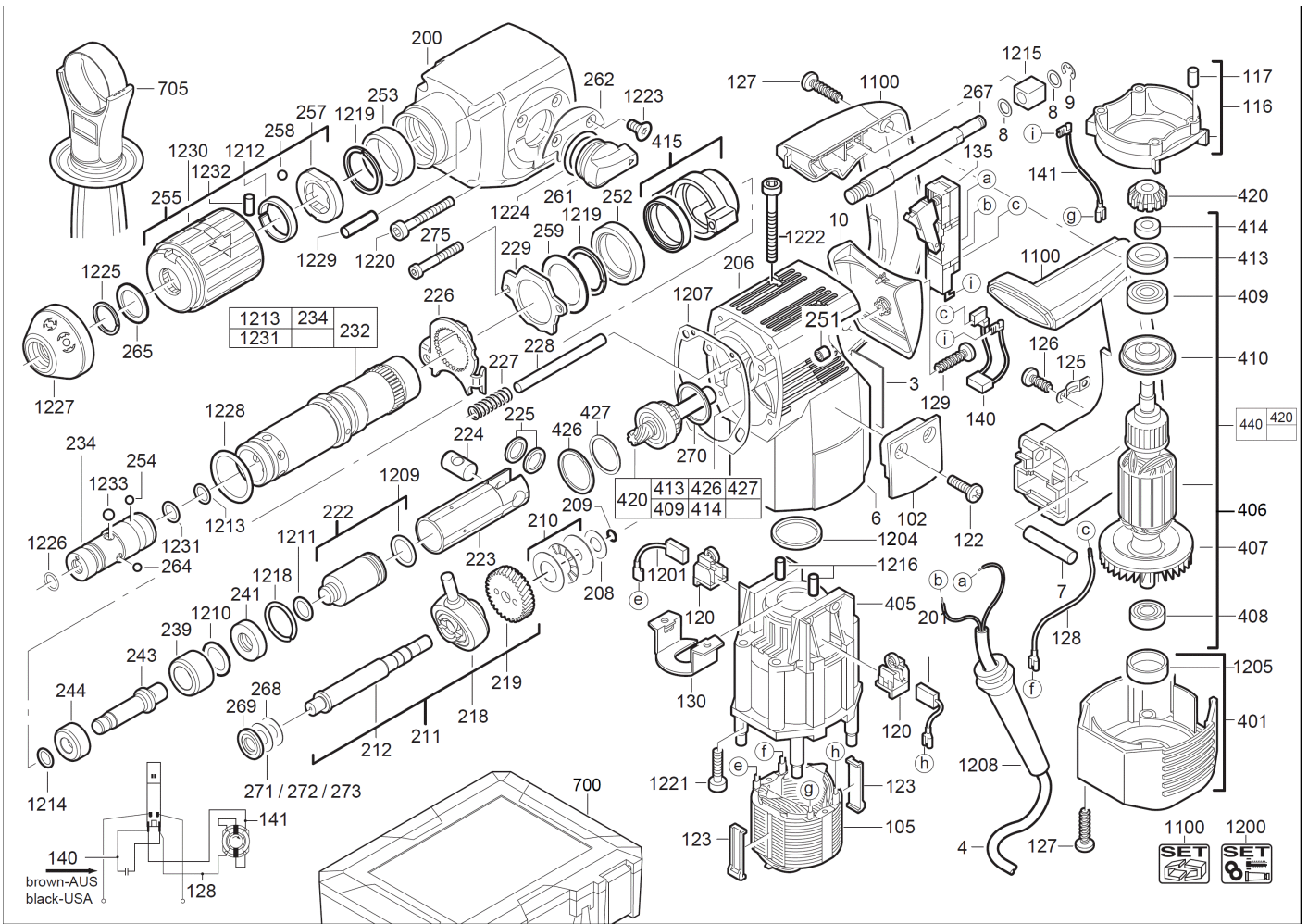


PM3 DEMOLITION HAMMER IN2

4935412541 - PM3 - 4000412542





| Position | Quantity | Description | Part number | EAN |
|----------|----------|---------------------------------|-------------|---------------|
| 0003 | 1 | RATING PLATE | 4931412549 | 4002395792436 |
| 0004 | 1 | CONNECTION CABLE | 4931250832 | 4002395586042 |
| 0006 | 2 | NAME PLATE | 4931389915 | 4002395739585 |
| 0007 | 1 | GROOVED DOWEL PIN | 4931623456 | 4002395702251 |
| 0008 | 2 | WASHER | 4931623094 | 4002395700370 |
| 0009 | 1 | WASHER | 4931621834 | 4002395696185 |
| 0010 | 1 | GEAR COVER | 4931412166 | 4002395793099 |
| 0102 | 2 | COVER | 4931412165 | 4002395793082 |
| 0105 | 1 | ELECTRIC FIELD | 4931426596 | 4002395846146 |
| 0116 | 1 | AIR DEFLECTOR RING | 4931353230 | 4002395641390 |
| 0117 | 4 | HOLDING-DOWN DEVICE | 4931405705 | 4002395799831 |
| 0120 | 2 | BRUSH HOLDER | 4931382268 | 4002395690961 |
| 0122 | 4 | SCREW | 4931624518 | 4002395757398 |
| 0123 | 2 | CENTERING LEDGE | 4931342808 | 4002395628612 |
| 0125 | 1 | CABLE COLLAR | 4931256500 | 4002395586547 |
| 0126 | 2 | SCREW | 4931624516 | 4002395757374 |
| 0127 | 7 | SCREW N874101-1 SHR H-K4X18 T15 | 4931624515 | 4002395757367 |
| 0128 | 1 | WIRE | 4931623541 | 4002395702756 |
| 0129 | 1 | SCREW | 4931622153 | 4002395696901 |
| 0130 | 1 | BEARING COVER | 4931356869 | 4002395648214 |
| 0135 | 1 | SWITCH | 4931375454 | 4002395731688 |
| 0140 | 1 | CAPACITOR | 4931624270 | 4002395725977 |
| 0141 | 1 | WIRE | 4931624269 | 4002395725991 |
| 0200 | 1 | GEAR BOX | 4931412607 | 4002395799350 |
| 0206 | 1 | GEAR BOX | 4931412124 | 4002395799428 |
| 0208 | 1 | WASHER | 4931623637 | 4002395703159 |
| 0209 | 1 | O-RING N874701 5X1 | 4931941082 | 4002395706945 |
| 0210 | 1 | THRUST BEARING | 4931360041 | 4002395654970 |
| 0211 | 1 | REDUCT. GEAR SHAFT | 4931384313 | 4002395735105 |
| 0212 | 1 | REDUCT. GEAR SHAFT | 4931417725 | 4002395839537 |
| 0218 | 1 | REPAIR KIT | 4931384560 | 4002395721733 |
| 0219 | 1 | REDUCTION GEAR | 4931426240 | 4002395905836 |
| 0222 | 1 | PERCUSSION BODY | 4931384314 | 4002395735112 |
| 0223 | 1 | CYLINDER | 4931384279 | 4002395717262 |
| 0224 | 1 | CYLINDRICAL BOLT | 4931331623 | 4002395613601 |
| 0225 | 2 | WASHER | 4931400589 | 4002395765980 |
| 0226 | 1 | LOCKING PIECE | 4931384316 | 4002395719983 |
| 0227 | 1 | PRESSURE SPRING | 4931384293 | 4002395735099 |
| 0228 | 1 | PIN | 4931623081 | 4002395700332 |
| 0229 | 1 | LATCH PLATE | 4931331787 | 4002395613908 |
| 0232 | 1 | SPINDLE | 4931392170 | 4002395732371 |
| 0234 | 1 | ADAPTER | 4931409762 | 4002395834693 |
| 0239 | 1 | SLEEVE | 4931409839 | 4002395839575 |
| 0241 | 1 | CORE LIFTER RING | 4931409775 | 4002395841370 |
| 0243 | 1 | SNAP DIE | 4931384284 | 4002395718320 |
| 0244 | 1 | STOP WASHER | 4931384283 | 4002395735051 |
| 0251 | 2 | NEEDLE BEARING | 4931219424 | 4002395583874 |
| 0252 | 1 | JUNK RING | 4931409776 | 4002395841578 |
| 0253 | 1 | HOLDING RING | 5131000000 | |
| 0254 | 6 | BALL | 4931805437 | 4002395706037 |

| Position | Quantité | Désignation | Référence | EAN |
|----------|----------|--------------------------|------------|---------------|
| 0255 | 1 | SET SLEEVE | 4931384299 | 4002395722549 |
| 0257 | 1 | JUMPER RING | 4931417929 | 4002395846504 |
| 0258 | 2 | BALL | 4931805413 | 4002395706020 |
| 0259 | 1 | WASHER | 4931623199 | 4002395700998 |
| 0261 | 1 | SWITCH HANDLE | 4931392506 | 4002395739318 |
| 0262 | 1 | LATCH PLATE | 4931379108 | 4002395685752 |
| 0264 | 1 | BALL | 4931805413 | 4002395706020 |
| 0265 | 1 | DISC | 4931624280 | 4002395731312 |
| 0267 | 1 | GUIDE BOLT | 4931392501 | 4002395738625 |
| 0268 | 2 | DISC N874237 | 4931624096 | 4002395705528 |
| 0269 | 1 | SPACER | 4931379420 | 4002395686773 |
| 0270 | 1 | RING | 4931409756 | 4002395905775 |
| 0271 | 1 | DISC N874237 | 4931624098 | 4002395705542 |
| 0272 | 1 | DISC N874237 | 4931624097 | 4002395705535 |
| 0273 | 1 | DISC N874237 | 4931624096 | 4002395705528 |
| 0275 | 2 | SCREW | 4931624282 | 4002395732104 |
| 0401 | 1 | MOTOR CAP | 4931412170 | 4002395799954 |
| 0405 | 1 | MOTOR HOUSING | 4931384337 | 4002395718429 |
| 0406 | 1 | ARMATURE | 4931432378 | 4002395899586 |
| 0407 | 1 | FAN | 4931342793 | 4002395628544 |
| 0408 | 1 | GROOVED BALL BEAR. | 4931341740 | 4002395626991 |
| 0409 | 1 | BALL BEARING | 4931624101 | 4002395705566 |
| 0410 | 1 | INSULATING DISC | 4931353260 | 4002395641482 |
| 0413 | 1 | SEAL RING | 4931442301 | 4002395888955 |
| 0414 | 1 | SPACER | 4931353238 | 4002395641413 |
| 0415 | 1 | BUSHING | 4931384557 | 4002395772704 |
| 0420 | 1 | PINION SHAFT | 4931432300 | 4002395898763 |
| 0426 | 1 | LOCKING RING | 4931616614 | 4002395694624 |
| 0427 | 1 | DISC N874237 A16,1X26X1 | 4931622564 | 4002395698417 |
| 0440 | 1 | REPAIR KIT | 4931432378 | 4002395899586 |
| 0700 | 1 | CARRYING CASE | 4931415330 | 4002395827954 |
| 0705 | 1 | HANDLE | 4931392532 | 4002395740000 |
| 1100 | 1 | HANDLE COMPL. | 4931412169 | 4002395798872 |
| 1200 | 1 | MAINTENANCE SET | 4931384311 | 4002395717088 |
| 1201 | 1 | CARBON BRUSH SET | 4931369477 | 4002395673476 |
| 1204 | 1 | O-RING | 4931623124 | 4002395700516 |
| 1205 | 1 | RUBBER SLEEVE | 4931360781 | 4002395656479 |
| 1207 | 1 | SEAL | 4931392504 | 4002395739127 |
| 1208 | 1 | PROTECTING COVER | 4931392174 | 4002395772872 |
| 1209 | 1 | SEAL RING | 4931379705 | 4002395687381 |
| 1210 | 1 | SEAL RING | 4931624492 | 4002395753529 |
| 1211 | 1 | SEAL RING | 4931624226 | 4002395717125 |
| 1212 | 1 | SPRING | 4931321064 | 4002395602865 |
| 1213 | 1 | SEAL RING N874701 12X1,5 | 4931624322 | 4002395739851 |
| 1214 | 1 | SEAL RING | 4931624227 | 4002395717132 |
| 1215 | 1 | DAMPING ELEMENT | 4931392502 | 4002395738618 |
| 1216 | 2 | HOLDING-DOWN DEVICE | 4931331549 | 4002395613465 |
| 1218 | 1 | RING | 4931623636 | 4002395703142 |
| 1219 | 2 | SPRING RING | 4931945764 | 4002395707317 |
| 1220 | 4 | SCREW | 4931623521 | 4002395702619 |

| Position | Quantité | Désignation | Référence | EAN |
|----------|----------|--------------------------|------------|---------------|
| 1221 | 4 | SCREW | 4931623520 | 4002395702602 |
| 1222 | 2 | SCREW | 4931623519 | 4002395702596 |
| 1223 | 2 | SCREW | 4931379109 | 4002395685769 |
| 1224 | 1 | O-RING | 4931623293 | 4002395701209 |
| 1225 | 1 | SPRING RING | 4931622874 | 4002395699568 |
| 1226 | 1 | SEAL RING | 4931624493 | 4002395755318 |
| 1227 | 1 | RUBBER CAP | 4931384925 | 4002395731046 |
| 1228 | 1 | SEAL RING N874701 12X1,5 | 4931624225 | 4002395735181 |
| 1229 | 1 | GREASE RETAIN.PLUG | 5131000000 | |
| 1230 | 1 | SET SLEEVE | 4931384295 | 4002395735419 |
| 1231 | 1 | HOLDING DISC | 4931392528 | 4002395739844 |
| 1232 | 1 | HOLDING-DOWN DEVICE | 4931307423 | 4002395593316 |
| 1233 | 2 | BALL | 4931624303 | 4002395736386 |