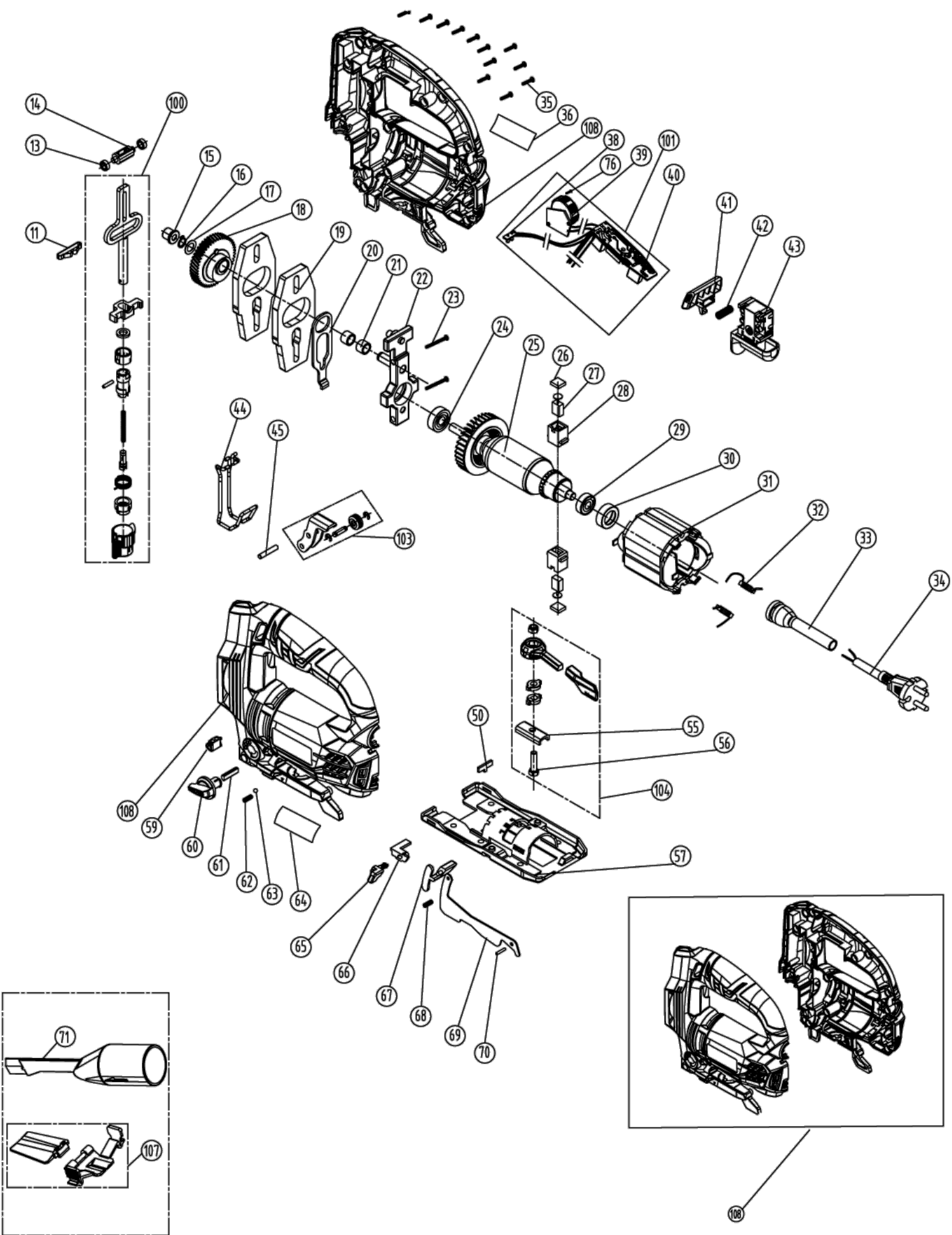


RJS1050G SCIE SAUT 680W

5133002219 - RJS1050G - 5133002219#1





| Position | Quantity | Description | Part number | EAN |
|----------|----------|---------------------|-------------|-----|
| 011 | 1 | SLIDE PLATE | 5131032094 | |
| 013 | 2 | BUSHING | 5131032095 | |
| 014 | 1 | STOP | 5131032096 | |
| 015 | 1 | GEAR SLEEVE | 5131032097 | |
| 016 | 1 | CIRCLIP | 5131032098 | |
| 017 | 1 | WASHER | 5131032099 | |
| 018 | 1 | GEAR | 5131032100 | |
| 019 | 2 | BALANCER | 5131032101 | |
| 020 | 1 | DRIVE | 5131032102 | |
| 021 | 2 | NEEDLE BEARING | 5131032103 | |
| 022 | 1 | BEARING BRACKET | 5131032104 | |
| 023 | 2 | SCREW | 5131032105 | |
| 024 | 1 | BALL BEARING | 5131032106 | |
| 025 | 1 | ARMATURE ASSEMBLY | 5131032107 | |
| 026 | 2 | BRUSH COVER | 5131032108 | |
| 027 | 2 | CARBON BRUSH | 5131032109 | |
| 028 | 2 | CARBON HOLDER | 5131032110 | |
| 029 | 1 | BALL BEARING | 5131032111 | |
| 030 | 1 | BEARING SLEEVE | 5131032112 | |
| 031 | 1 | ELECTRIC FIELD | 5131032113 | |
| 032 | 2 | CHOKING COIL | 5131032114 | |
| 033 | 1 | PROTECTION SLEEVE | 5131032115 | |
| 034 | 1 | CONNECTION CABLE | 5131032116 | |
| 035 | 12 | SCREW | 5131032117 | |
| 036 | 1 | LABEL | 5131032141 | |
| 041 | 1 | LOCKING PIN | 5131032120 | |
| 042 | 1 | SPRING | 5131032121 | |
| 043 | 1 | SWITCH | 5131032122 | |
| 044 | 1 | ROD | 5131032123 | |
| 045 | 1 | PIN | 5131032124 | |
| 050 | 1 | INSERT F.BASE PLATE | 5131032126 | |
| 055 | 1 | BUFFER PLATE | 5131032206 | |
| 056 | 1 | SCREW | 5131032207 | |
| 057 | 1 | BASE PLATE | 5131032128 | |
| 059 | 1 | LENS PAD | 5131032129 | |
| 061 | 1 | SPINDLE | 5131032131 | |
| 062 | 1 | SPRING | 5131032132 | |
| 063 | 1 | BALL | 5131032133 | |
| 064 | 1 | LABEL | 5131032140 | |
| 065 | 1 | TRIGGER | 5131032134 | |
| 066 | 1 | LEVER | 5131032135 | |
| 067 | 1 | BUTTON | 5131032136 | |
| 068 | 1 | SPRING | 5131032137 | |
| 069 | 1 | PLATE STRAIGHTENER | 5131032138 | |
| 070 | 1 | PIN | 5131032139 | |
| 071 | 1 | DUST REFLECTOR | 5131032143 | |
| 076 | 1 | SCREW | 5131032142 | |
| 100 | 1 | SAW BAR ASSY | 5131032093 | |
| 101 | 1 | ELECT.CIRCUIT BOARD | 5131032119 | |
| 103 | 1 | GUIDE ROLLER | 5131032125 | |

| Position | Quantité | Désignation | Référence | EAN |
|-----------------|-----------------|--------------------|------------------|------------|
| 104 | 1 | OPERATION LEVER | 5131032127 | |
| 107 | 1 | GUIDE | 5131032144 | |
| 108 | 1 | MOTOR HOUSING | 5131032118 | |