

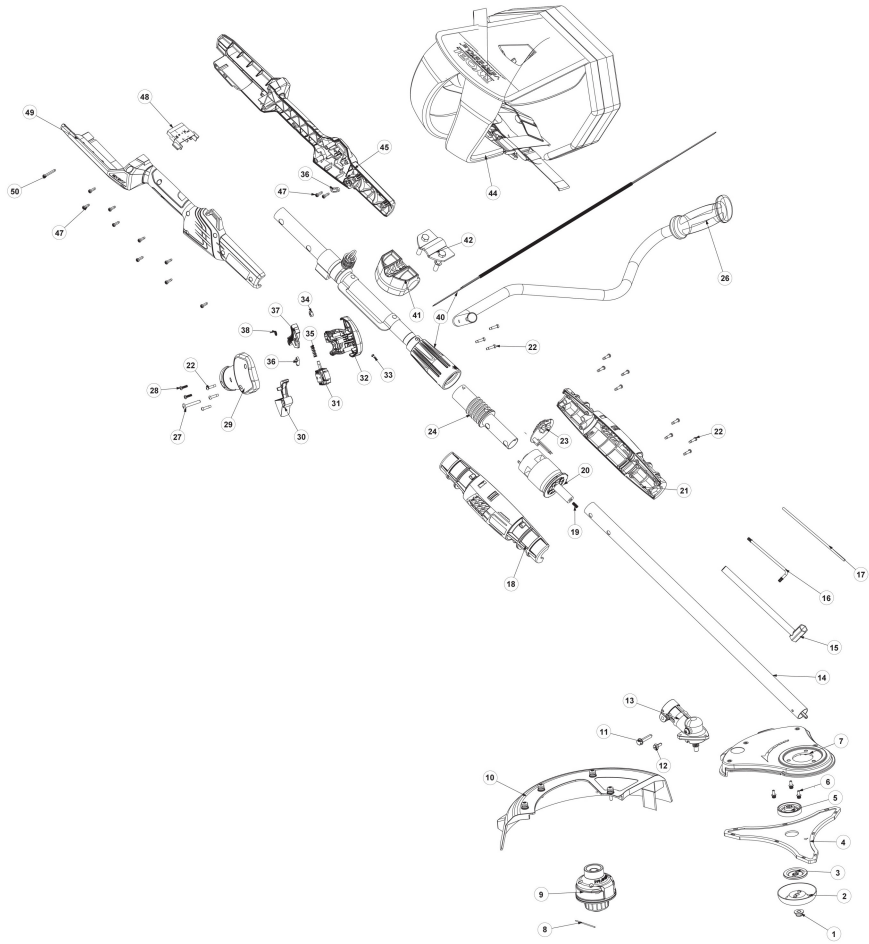
RBC36B26B 36V Zero Brush cutter XXX

5133002405 - RBC36B26B - 4000444834





4000444834



Position	Quantity	Description	Part number	EAN
1001	1	NUT	5131038736	4058546018894
1002	1	WASHER	5131033940	4002395273072
1003	1	WASHER	5131038735	4058546018887
1005	1	WASHER	5131033938	4002395273058
1006	3	SCREW	5131035059	4058546145743
1007	1	GUARD	5131035090	4058546145996
1008	1	NYLON LINE	5131197852	4002395139675
1010	1	GUARD	5131035085	4058546145941
1011	1	SCREW	5131035058	4058546145736
1012	1	SCREW	5131035057	4058546145729
1013	1	GEAR BOX	5131033937	4002395273041
1014	1	TUBE	5131035052	4058546145675
1015	1	WRENCH	5131038745	4058546018986
1016	1	WRENCH	5131034510	4058546141738
1017	1	ROD	5131017834	4058546106492
1018	1	HOUSING	5131035051	4058546145668
1019	1	SPRING	5131035040	4058546145552
1020	1	MOTOR ASSEMBLY	5131041267	4058546065317
1021	1	HOUSING	5131035047	4058546145620
1022	14	SCREW	5131016161	4058546019990
1023	1	ELECT.CIRCUIT BOARD	5131035037	4058546145521
1024	1	CONNECTOR	5131035042	4058546145576
1026	1	HANDLE	5131041268	4058546065324
1027	1	SCREW	5131001855	4058546083564
1028	2	SCREW	5131034734	4058546143275
1029	1	HANDLE	5131035069	4058546145811
1030	1	TRIGGER	5131035072	4058546145835
1031	1	SWITCH	5131041269	4058546065331
1032	1	HANDLE	5131035073	4058546145842
1033	1	SCREW	5131035627	4058546150341
1034	1	NUT	5131001059	4058546080785
1035	1	SPRING	5131034788	4058546143572
1036	2	PLATE	5131035117	4058546146214
1037	1	TRIGGER	5131035070	4058546145828
1038	1	SPRING	5131035071	4058546197018
1040	1	TUBE	5131041270	4058546065348
1041	1	BRACKET	5131035038	4058546145538
1042	1	CLAMP	5131035062	4058546145767
1045	1	HANDLE	5131035030	4058546145477
1047	11	SCREW	5131035877	4058546152673
1048	1	TERMINAL PLUG	5131041271	4058546065355
1049	1	HANDLE	5131035027	4058546145453
1050	1	SCREW	5131034780	4058546143510
1004	1	RAC117 TRI-ARC BLADE 26CM EMEA	5132002668	4892210819734
1009	1	RAC114 36V BRUSHCUTTER SPOOL	5132002669	4892210819727
1044	1	RAC138 VERTEBRAE+ HARNESS	5132002706	4892210822154